

Climate Action in Language Education

Cristiana Osan

Teodora Naiba

#TheClimateConnection



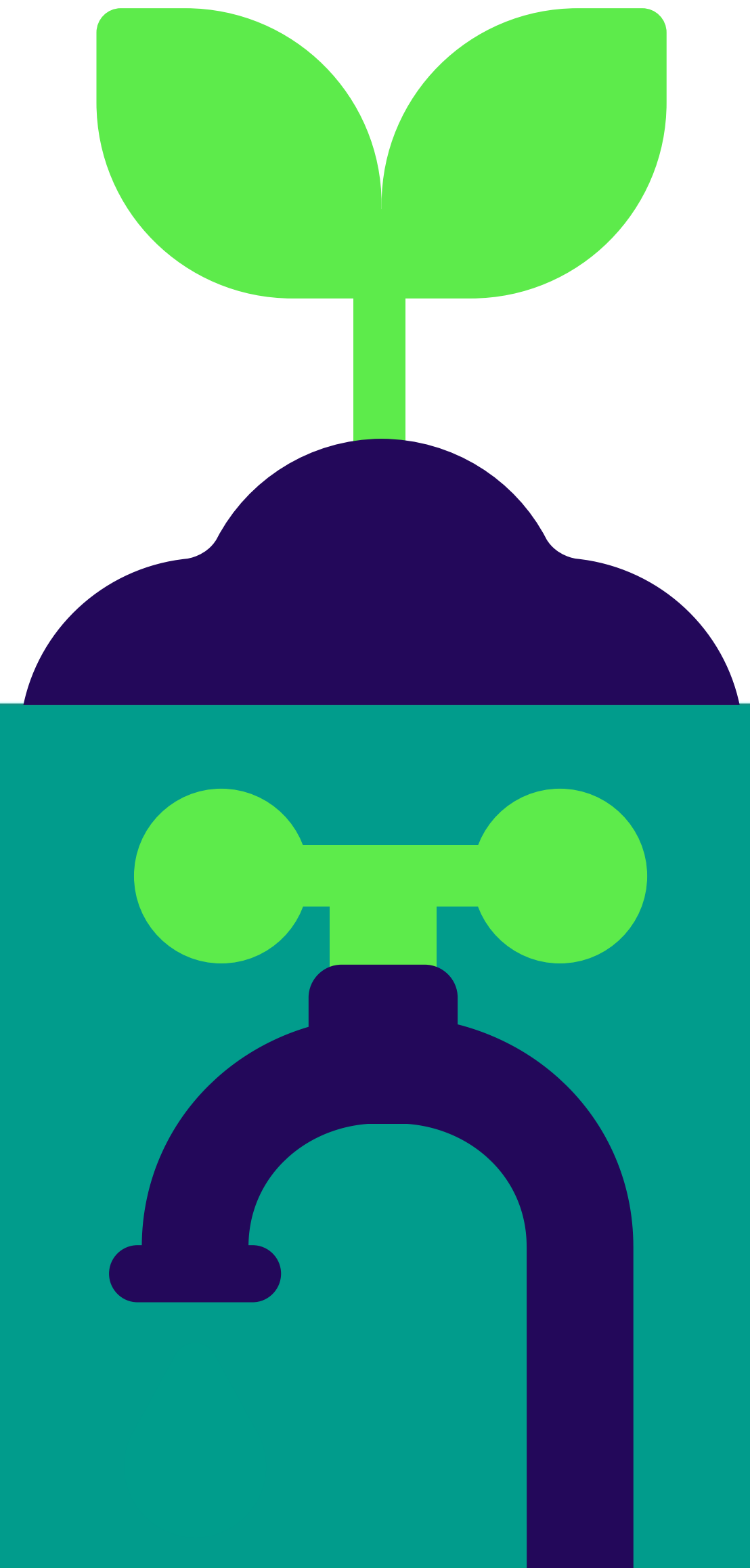
About COP26

The UK will host the 26th UN Climate Change Conference of the Parties (COP26) in Glasgow on 1 – 12 November 2021.



**UN CLIMATE
CHANGE
CONFERENCE
UK 2021**

IN PARTNERSHIP WITH ITALY



The Climate Connection

Discover. Share. Act.
[britishcouncil.org/
climate-connection](https://britishcouncil.org/climate-connection)



**Our
planet.
Our
future.**



Research Strand

Desk research

Online surveys

- Teachers
- Institutions
- Publishers
- Teenage students

Interviews

Some findings



Students (c2500)

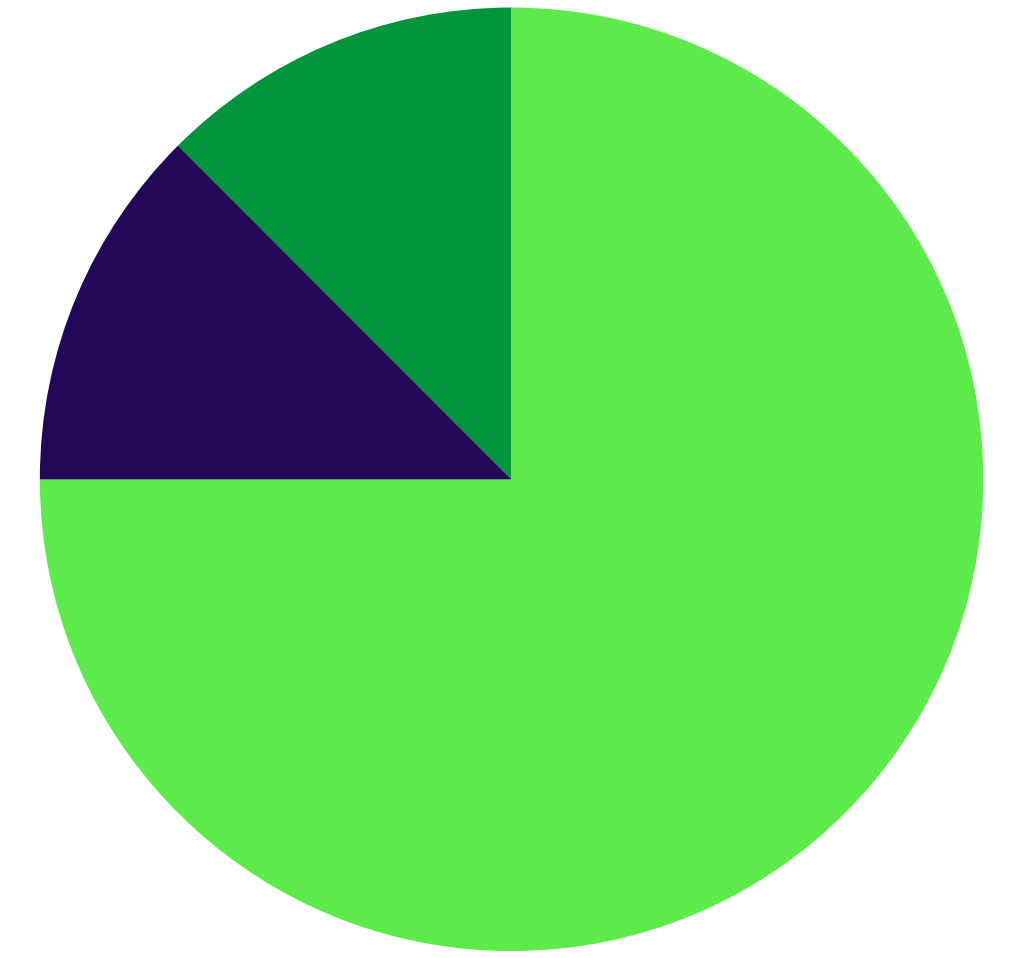
Has your school done projects about climate change in English?

Yes 24.51% No 75.49%

Would you like English lessons to have more climate topics?

Yes 71.59% No 28.41%

Social media makes up 42% of where young people are accessing information on climate change, only 14% say they receive information from school.



Teachers (c1800/109 countries)

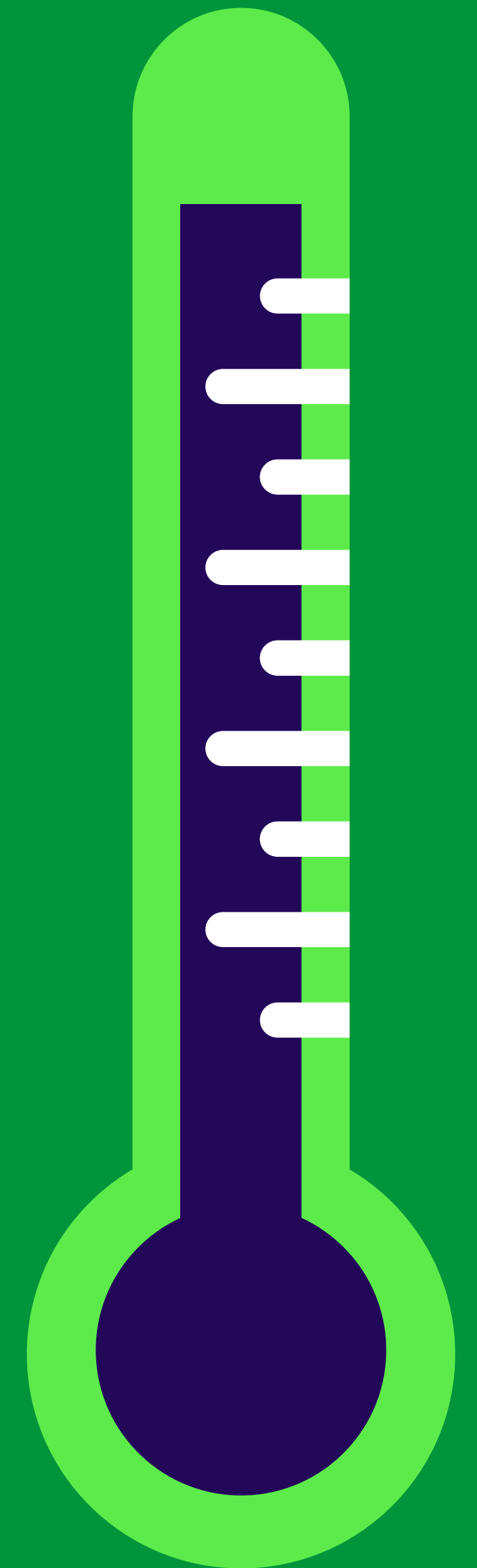
87% believe that ELT Teachers have a significant role to play in climate change education

70% believe (agree/strongly agree) that climate change should be embedded throughout each unit in course books

45% sometimes incorporate climate change into their classes

80% feel they need training on how to integrate climate change topics into lessons

67% do not receive training or support in how to do it





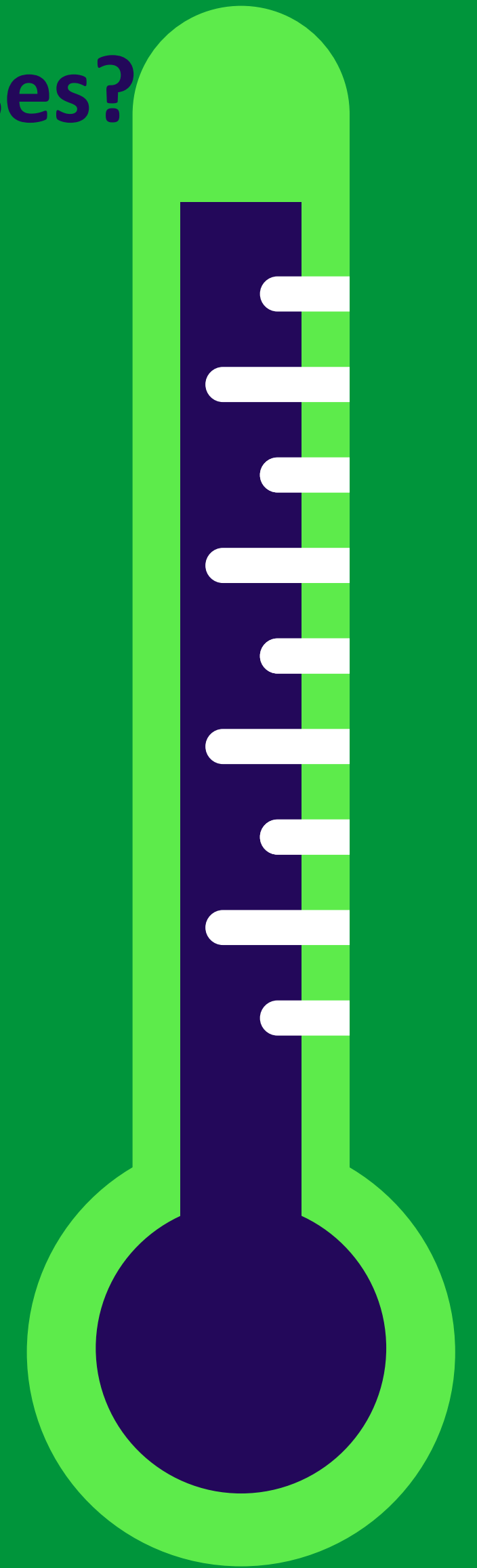
Spreading the word

“Students get engaged in these topics. They become aware of the need to be environmentally friendly and tell their relatives about it.”

Araceli Salas, teacher educator, Mexico.

Why should teachers include climate topics in their language classes?

- Learners learn vocabulary and structures that allow them to communicate with people all around the world on current topics.
- Many international certificates include texts and topics related to environmental issues.
- Learning takes place inside and outside the classroom, which enables learners to make connections and to apply their learning into the real world.
- Learners need to do research and then make their own decisions on complex issues, which leads to developing their critical and creative thinking.
- Learners become more sensitive towards and more appreciative of nature and develop a healthy lifestyle.
- **Because it's a crisis!**



Which terms?

Look at the two sets of terms. Which has a bigger emotional impact? Why?

Climate change	Climate crisis/emergency
Climate sceptic	Climate denier
Carbon dioxide emissions	Greenhouse gas emissions
Global warming	Global heating
Biodiversity	Wildlife
Fish stock	Fish populations

Climate Action in Language Education

Cristiana Osan
Teodora Naiba

#TheClimateConnection

